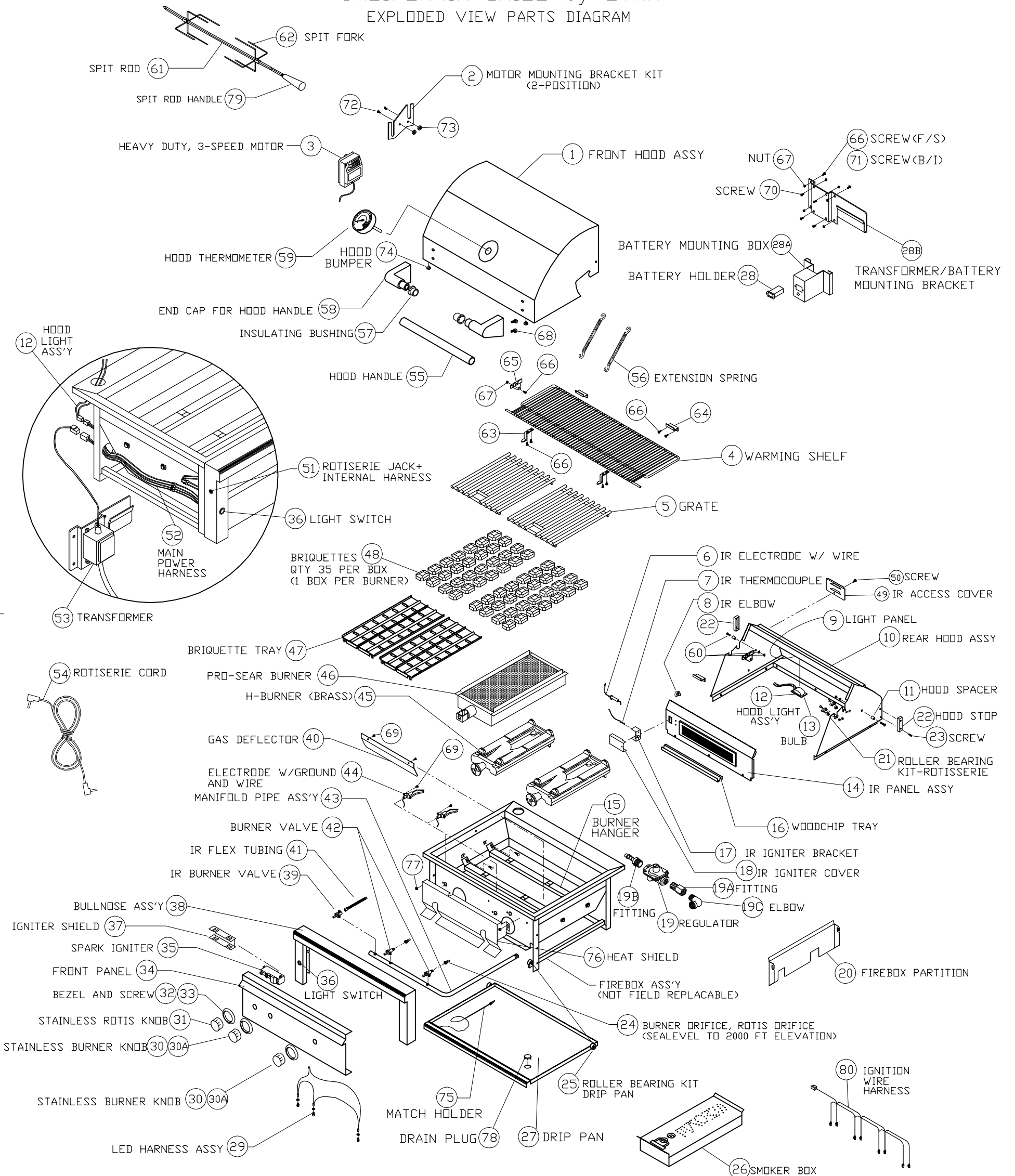


California Grill by LYNX

CALIFORNIA GRILL by LYNX EXPLODED VIEW PARTS DIAGRAM



CALIFORNIA GRILL BY LYNX PARTS LIST

ITEM	GRILL SIZE	PART NO.	DESCRIPTION
1	27	80441	FRONT HOOD ASSY, 27"
	36	80442	FRONT HOOD ASSY, 36"
	42	80443	FRONT HOOD ASSY, 42"
2	ALL	90132	MOTOR MOUNTING BRACKET KIT
3	ALL	80277	MOTOR ASSY, HEAVY DUTY 3 SPEED
4	27	32555	WARMING SHELF, 27"
	36	32110	WARMING SHELF, 36"
	42	32111	WARMING SHELF, 42"
5	27	17012	(2) GRATES- 12" x 18"
	36	17020	(2) GRATES- 16 1/2" X 18 1/2"
	42	30018	(2) GRATES- 13 1/2" X 21"
	42	30019	(1) GRATE- 12" X 21" (CENTER)
6	ALL	31173	IR ELECTRODE W/45" WIRE
7	ALL	20018	THERMOCOUPLE
8	ALL	31795	IR BRASS ELBOW, 7/16-20 MALE THREAD
9	27	32551	LIGHT PANEL/REAR HOOD LINER, 27"
	36	32441	LIGHT PANEL FOR DUAL LIGHTS, 36"
	42	32442	LIGHT PANEL FOR DUAL LIGHTS, 42"
10	27	80321	REAR HOOD ASSY, 27" NON-IR
	36	80270	REAR HOOD ASSY, 36"
	42	80271	REAR HOOD ASSY, 42"
11	ALL	20054	HOOD SPACER, ALL PRO SERIES
12	27	80446	HOOD LIGHT ASS'Y, SINGLE W/10W BULB
	36,42	80447	HOOD LIGHT ASS'Y, DUAL W/10W BULB
13	ALL	31979	BULB, REPLACEMENT, 10W HALOGEN
14	27	80319	REAR FINISHING PANEL, NON-IR, 27"
	36	80274	IR PANEL ASSY, 36"
	42	80275	IR PANEL ASSY, 42"
	27	32988	IR ROTIS. BURNER ONLY (SMALL-16 IN.)
	36	32989	IR ROTIS. BURNER ONLY (MEDIUM-21 IN.)
	42	32990	IR ROTIS. BURNER ONLY (LARGE-28 IN.)
	27	32991	IR BURNER FRAME ONLY (SMALL-16 IN.)
	36	32992	IR BURNER FRAME ONLY (MEDIUM-21 IN.)
	42	32993	IR BURNER FRAME ONLY (LARGE-28 IN.)
	ALL	32644	SCREW, #8-32 X 5/16 PH. FLAT HD
15	27	10067	BURNER HANGER, 27"
	36	32245	BURNER HANGER, 36"
	42	32485	BURNER HANGER, 42"
16	27	10159	WOODCHIP TRAY (27")
	36,42	10158	WOODCHIP TRAY (36", 42")
17	ALL	10008	IR IGNITER BRACKET
18	ALL	10043	IR IGNITER COVER
19	ALL	33139	REGULATOR, LP ONLY
	ALL	33140	REGULATOR, N/G ONLY
19A	ALL	33143	FITTING, 1/2" FEMALE TO 1/2" MALE LP/NG
19B	ALL LP	33142	FITTING, STRAIGHT 8 mm X 1/2" MALE, LP
19C	ALL	13010	STREET ELBOW, 1/2" x 90 DEGREE
20	42	32865	FIREBOX PARTITION, 42"
	36	33056	FIREBOX PARTITION, 36"
21	ALL	90128	ROLLER BEARING KIT-ROTISSERIE (2 PARTS EA)
22	ALL	32468	HOOD STOP, PRO 2008
23	ALL	32469	SCREW/HOOD STOP-#8-32 X 1" PH TRUSS HD
24	27,36	PRENGK	COMPLETE DRIFICE FIELD KIT-LP TO NG
	27,36	PRELPK	COMPLETE DRIFICE FIELD KIT-NG TO LP
	42	PRONGK	COMPLETE DRIFICE FIELD KIT-LP TO NG
	42	PROLPK	COMPLETE DRIFICE FIELD KIT-NG TO LP
	27,36	13013	DRIFICE,BURNER, NG (#41 SHORT)
	27,36	13019	DRIFICE,BURNER, LP (#53 SHORT)
	42	30329	DRIFICE,BURNER, NG (#41 LONG)
	42	30328	DRIFICE,BURNER, LP (#53 LONG)
	PROSEAR	13015	DRIFICE,BURNER, NG (#44 SHORT)
	PROSEAR	13020	DRIFICE,BURNER, LP (#54 SHORT)
	36	13016	DRIFICE, IR ROTIS., NG (#50 SHORT)
	36	13021	DRIFICE, IR ROTIS., LP (#57 SHORT)
	27	13016	DRIFICE, IR ROTIS., NG (#50 SHORT)
	27	13021	DRIFICE, IR ROTIS., LP (#57 SHORT)
	42	30470	DRIFICE, IR ROTIS., NG (#48 SHORT)
	42	31342	DRIFICE, IR ROTIS., LP (#56 SHORT)
25	ALL	90129	ROLLER BEARING KIT-DRIP PAN (2 PARTS EA)
26	42	90073	SMOKER BOX ASSY, 42"
	27,36	90074	SMOKER BOX ASSY, 27", 36"
27	27	32548	DRIP PAN, 27"
	36	31494	DRIP PAN, 36"
	42	18051	DRIP PAN, 42"
28	ALL	31879	BATTERY HOLDER
28A	ALL	32324	BATTERY MOUNTING BOX
28B	ALL	33144	BATTERY/TRANSFORMER MNTG BRACKET
29	27	80434	LED HARNESS ASSY, 27" NON-IR
	36/42	80436	LED HARNESS ASSY, 36"/42"
30	ALL	90143	KNOB, REPLACEMENT, BURNER, STAINLESS
30A	ALL	90150	KNOB KIT, STAINLESS (3 BURNER+1 ROTIS)
31	36,42,54	90144	KNOB, REPLACEMENT, ROTIS, STAINLESS
32	ALL	10001	BEZEL
33	ALL	31929	BEZEL SCREW, #6-32 X 1/8 PH PAN
34	27	32547	FRONT PANEL, 27" NON-IR
	36	31682	FRONT PANEL, 36"
	42	31687	FRONT PANEL, 42"

ITEM	GRILL SIZE	PART NO.	DESCRIPTION
35	36,42	31161	SPARK IGNITER, 4 SPARK
	27	31162	SPARK IGNITER, 2 SPARK
36	ALL	33148	LIGHT SWITCH + HARNESS, BLUE LIGHTED
37	ALL	31398	IGNITER SHIELD
38	27	80317	BULLNOSE ASS'Y, 27"
	36	80263	BULLNOSE ASS'Y, 36"
	42	80265	BULLNOSE ASS'Y, 42"
39	ALL	31772	IR BURNER VALVE W/MICROSWITCH
40	36 P/S	31562	GAS DEFLECTOR, 36" PROSEAR
	42 P/S	31688	GAS DEFLECTOR, 42" PROSEAR
41	ALL	31794	FLEX HOSE, 9 MM X 38" W/ 7/16 FITTINGS
42	ALL	32846	MAIN BURNER VALVE W/ MICROSWITCH
43	27	80252	MANIFOLD ASS'Y W/VALVES, 27" LP NON IR
	27	80254	MANIFOLD ASS'Y W/VALVES, 27" NG NON IR
	36	80227	MANIFOLD ASS'Y W/VALVES, 36" LP PROSEAR
	36	80228	MANIFOLD ASS'Y W/VALVES, 36" LP
	36	80229	MANIFOLD ASS'Y W/VALVES, 36" NG PROSEAR
	36	80230	MANIFOLD ASS'Y W/VALVES, 36" NG
	42	80201	MANIFOLD ASS'Y W/VALVES, 42" LP PROSEAR
	42	80203	MANIFOLD ASS'Y W/VALVES, 42" NG PROSEAR
44	ALL	31254	ELECTRODE, GROUNDED, W/15" WIRE
	ALL	31255	ELECTRODE, GROUNDED, W/25" WIRE
	36,42	31807	ELECTRODE, GROUNDED, W/34" WIRE
45	42	30485	H-BURNER (BRASS)
	27,36	11012	H-BURNER (BRASS)
46	36PS	32915	PROSEAR BURNER, SHORT, 36"
	36PS	32243	SCREEN REPLACEMENT PROSEAR BURNER, 36"
	42	33000	PROSEAR BURNER, 42"
		32242	SCREEN REPLACEMENT PROSEAR BURNER, 42"
47	42	80015	BRIQUETTE TRAY, 42"
	42	90071	COMPLETE TRAY W/ BRIQUETTES & CLIPS
	42	80033	BRIQUETTE TRAY, NARROW, 42"
	42	90072	COMPLETE TRAY W/ BRIQUETTES & CLIPS
	27,36	80232	BRIQUETTE TRAY, 27", 36"
	27,36	90070	COMPLETE TRAY W/ BRIQUETTES & CLIPS
48	ALL	90053	BRIQUETTES, 35 PER BOX
49	ALL	30417	IR ACCESS COVER
50	ALL	14012	SCREW, 1/4-20 X 3/8 PH TRUSS HD, S/S
51	ALL	80440	ROTISSERIE JACK + INTERNAL HARNESS
52	ALL	80439	MAIN POWER HARNESS
53	ALL	33138	TRANSFORMER (U.K.)
		33270	TRANSFORMER (ITALY)
54	ALL	31170	ROTISSERIE EXTERNAL CORD
55	27	32557	HOOD HANDLE, 27"
	36	32523	HOOD HANDLE, 36"
	42	32524	HOOD HANDLE, 42"
56	42	31874	EXTENSION SPRING, 42"
	27,36	31780	EXTENSION SPRING, 27", 36"
57	ALL	31738	INSULATING BUSHING, HOOD HANDLE
58	ALL	31736	END CAP FOR HOOD HANDLE
59	ALL	33558	HOOD THERMOMETER, SEALED
	ALL	33573	WASHER FOR HOOD THERMOMETER
60	ALL	14013	PIVOT SCREW, 1/4-20 X 1" HEX DRIVE
	ALL	14009	PIVOT SCREW NUT, HEX, 1/4-20 S/S
	ALL	14026	PIVOT WASHER, SPLIT LOCK, 1/4 S/S
61	36	33152	SPIT ROD, 36"
	42	33153	SPIT ROD, 42"
62	ALL	31563	SPIT FORK, HEAVY DUTY, ALL SIZES
63	ALL	33033	FRONT RETAINING BRACKET, WARMING RACK
64	ALL	32133	REAR RETAINING BRACKET, WARMING RACK
65	ALL	33597	LEFT RETAINING BRACKET, WARMING RACK
66	ALL	14014	SCREW #8-32 x 3/8 PH TRUSS HEAD S/S
67	ALL	14024	LOCK NUT, #8-32, S/S
68	ALL	14030	BOLT, HEX HEAD, 1/4-20 X 1/2", S/S
69	ALL	14018	ELECTRODE SCREW-#6-32 X 1/4 PH PAN HD
70	ALL	31649	SCREW, #8-32 X 5/8 PH PAN HD
71	ALL B/I	31013	SCREW, #8 X 1/2 PH TRUSS HD TYPE 'A'
72	ALL	32190	SCREW, #10-32 X 1-1/4 PH FLAT HD S/S
73	ALL	32939	ROTISSERIE SPACER
74	ALL	32477	HOOD BUMPER, .500 DIA
75	ALL	31031	ALTERNATE LIGHTING DEVICE, MATCH HOLDER
76	27	32596	HEAT SHIELD, 27"
	36	31815	HEAT SHIELD, 36"
	36	31816	HEAT SHIELD, PROSEAR 36"
	42	31817	HEAT SHIELD, PROSEAR 42"
77	ALL	14023	NUT, COMBINATION (FOR HEAT SHIELD)
78	ALL	90151	DRAIN PLUG AND SEAL KIT, DRIP PAN
79	36,42	20014	SPIT ROD HANDLE
80	27	80473	IGNITION WIRE HARNESS 27" NON-IR
	36,42	80475	IGNITION WIRE HARNESS 36", 42"